

MONTHLY MEMBERSHIP PROGRESS REPORT

District 3234H1

Results as of: 8/31/2024

GMT:

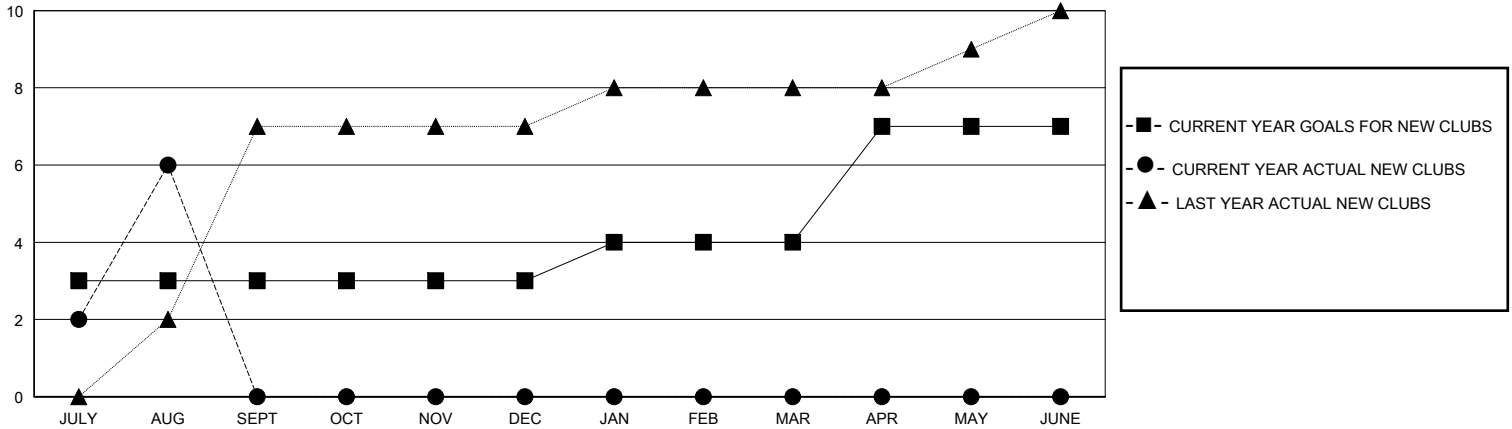
LOCATION INDIA

GMT CA

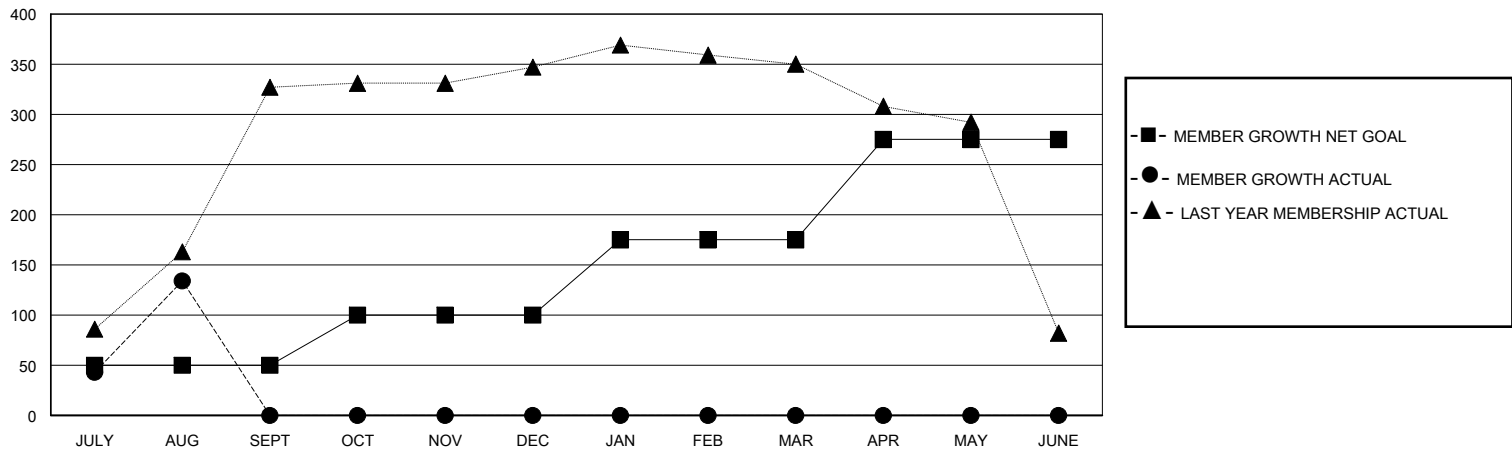
Clubs			
RESULTS FOR 2024-2025			
QUARTER	NEW CLUB GOAL	NEW CLUBS	DROPPED CLUBS
JULY/AUG/SEPT	3	6	0
OCT/NOV/DEC	0	0	0
JAN/FEB/MAR	1	0	0
APR/MAY/JUNE	3	0	0

Members			
RESULTS FOR 2024-2025			
QUARTER	MEMBER GROWTH NET GOAL	MEMBER GROWTH ACTUAL	DROPPED MEMBERS ACTUAL (including transfers)
JULY/AUG/SEPT	50	205	65
OCT/NOV/DEC	50	0	0
JAN/FEB/MAR	75	0	0
APR/MAY/JUNE	100	0	0

GOALS AND ACTUAL NEW CLUBS CUMULATIVE



GOALS AND ACTUAL MEMBERS CUMULATIVE



DROPPED CLUBS: 0	25 CLUBS OF 114 ADDED 1 OR MORE NEW MEMBERS	<u>GENDER DISTRIBUTION</u>	
<u>DROPPED MEMBERS</u>		MALE	2,314 (62.80%)
DECEASED	1	FEMALE	1,371 (37.20%)
CLUB CANCELLED	0	TOTAL FAMILY UNIT MEMBERS	
OTHER	64	2,330	
TOTAL	65	FAMILY MEMBERS PAYING HALF DUES	
		1,240	

[CLICK HERE FOR CUMULATIVE MEMBERSHIP DATA](#)